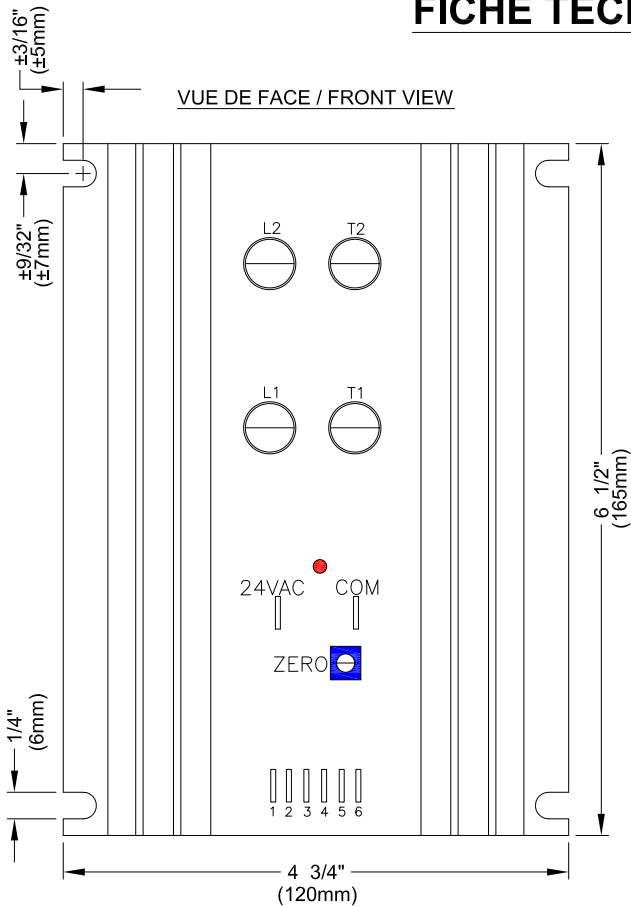


CCS-15-3

FICHE TECHNIQUE / SPEC SHEET



SPECIFICATIONS:

MODULE DE PUISSANCE / POWER MODULE : TYPE SCR

RADIATEUR / HEATSINK : TYPE MS-15170

ALIMENTATION REQUISE / REQUIRED SUPPLY : 24VAC

SIGNAL DE CONTRÔLE / CONTROL SIGNAL : 0-5Vdc, 0-10Vdc,
0-135 ohms & 4-20mA

MODÈLE / MODEL : CCS-15-3

COURANT / AMPERAGE : 15A

VOLTAGE : 48VAC - 600VAC, 3 PHASES (2 LEGS), 50-60 Hz

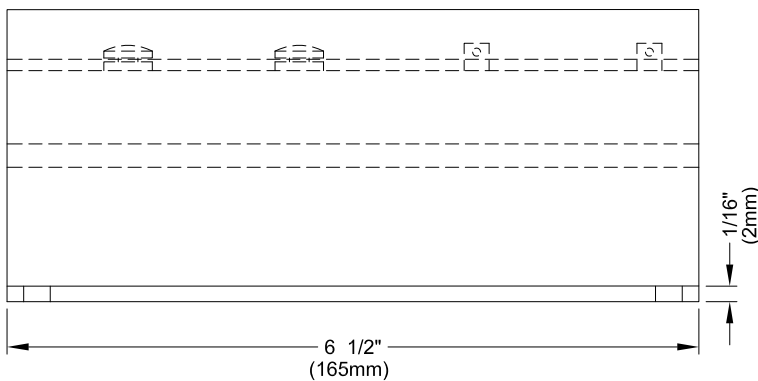
OPÉRATION PAR PASSAGE À ZÉRO / ZERO-CROSS OPERATION



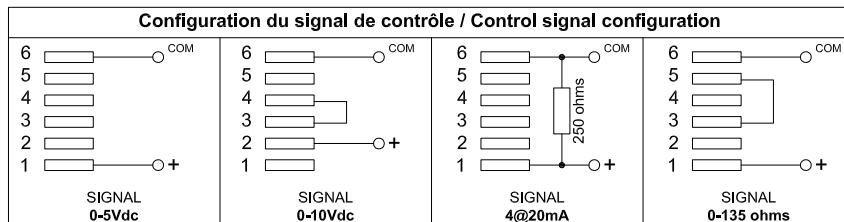
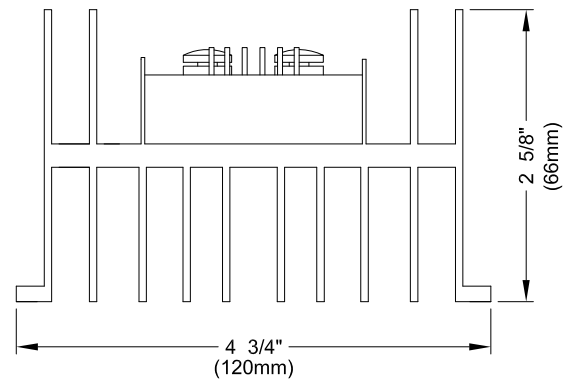
**DIRECTION D'AIR /
AIR FLOW**

L1 & L2 = LIGNES / LINES
T1 & T2 = CHARGES / LOADS

VUE DE CÔTÉ / SIDE VIEW



VUE DU BAS / BOTTOM VIEW



CRISTAL

2025 LAVOISIER #135
QUEBEC, QC, CANADA
G1N 4L6
TEL: 1-800-681-9590
FAX: 1-418-681-7393
www.cristalcontrols.com



C US
CAN/CSA-C22.2 NO. 14-M95
-APPAREILLAGE INDUSTRIEL DE COMMANDE
UL Std No. 508
-INDUSTRIAL CONTROL EQUIPMENT

- PROPOSITION
- APPROBATION
- INFORMATION

Préparé par: LT, Vérifié par: PC

DESSIN / DRAWING :

CCS-15-3

DATE :

MARS 2012